

marine doors

 **33 db**
sound reduction



BANCO supplies B15 class fire-proof doors for every type of ship and every maritime facility

The doors are produced and equipped according to customers' needs and wishes.

Door leaf thickness: 38-43mm

Max. clear opening: 1000x2100mm

Sound reduction: 33 dB

Door leaf can be covered with PVC foil, HPL laminate, made of stainless steel or steel/stainless steel and powder painted



Optional features:

ventilation grill

kick-out panel

door closer

door stay

various design of door handles and locks

integrated head piece etc.

BANCO have all necessary approvals and certificates from classification society

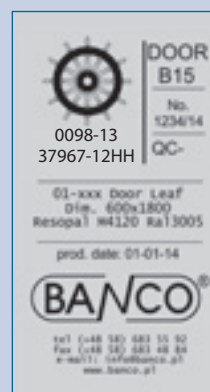


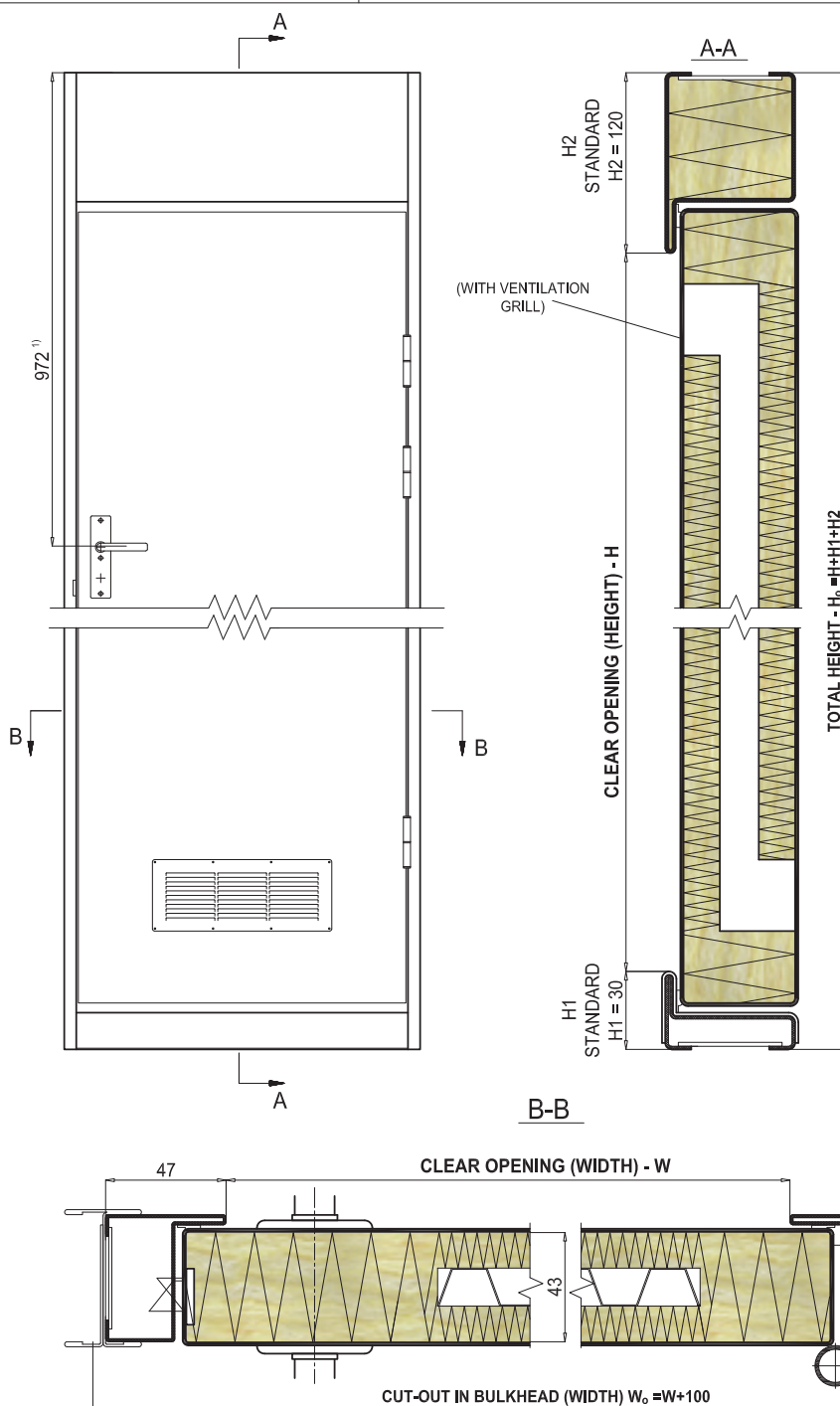
BANCO supplies B15 class acoustic fire-proof doors for every type of ship and every maritime facility

The doors are produced and equipped according to customers' needs and wishes.
 Door leaf thickness: 43mm
 Max. clear opening: 1000x2100mm
 Sound reduction: 40 dB

We mark each door with following pieces of information:

Protection class
 Production No.
 Door No.
 Dimensions
 Production date





CLEAR OPENING		CUT OUT		WEIGHT
H	W	H ₀	W ₀	kg
1800	600	-	700	56,9
1950		-		57,7
2100		-		58,5
1800	700	-	800	62,9
1950		-		63,7
2100		-		64,6
1800	800	-	900	68,9
1950		-		69,8
2100		-		70,7
1800	900	-	1000	74,9
1950		-		75,9
2100		-		76,9
1800	1000	-	1100	80,9
1950		-		81,9
2100		-		83,0

APPROXIMATE VALUES FOR DOORS
WITH TOTAL HEIGHT 2250 MM

MARKING:

Dimensions:

W x H - clear opening, H1, H2 - as in the drawing

Hinging/Accessories:

L - left hinged, **R** - right hinged

ATH - Acoustic, top grill from hinge side

ATS - Acoustic, top grill from opposite side

Finishing:

Door leaf: **H:X - X** - powder painted or PVC coated, colour - hinges side, **O/X - X** - powder painted, or PVC coated, colour - opposite side

Frame: **F:X - X** - powder painted, colour

MARKING EXAMPLE

B-15 door according to KK/3501-101, clear opening: 700x1850mm, **ATH**- Acoustic, top grill from hinge side, door leaf powder painted with RAL9010 (hinges side) and Gislaved Decor H-1320-27-F12R (opposite side), frame powder painted with RAL9010:

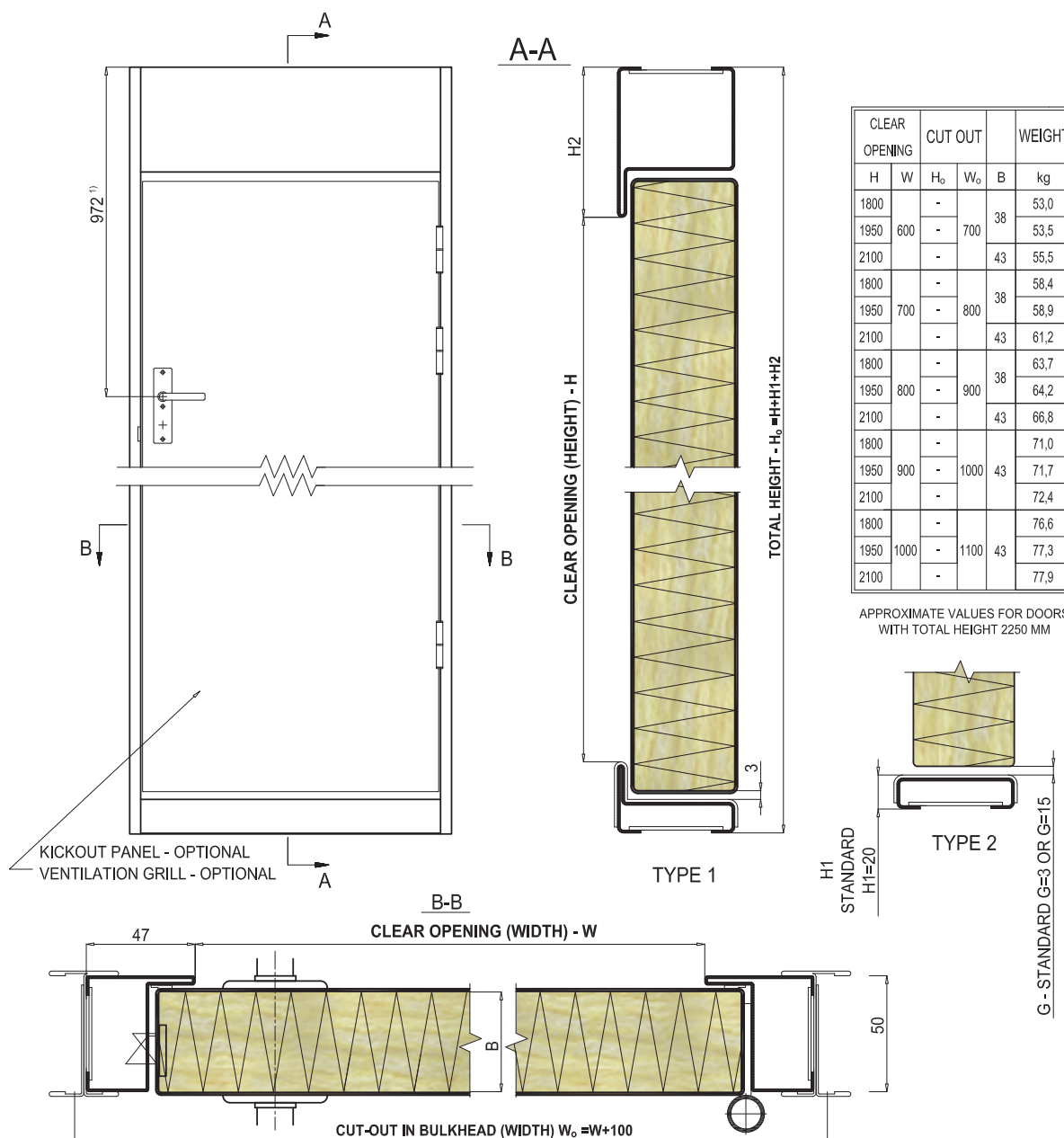
DOOR B-15 (KK/3501-101)/700X1850/30/200/L/ATH/H:RAL9010/O:Gislaved Decor H-1320-27-F12R/F:RAL9010

NOTES:

- 1) 972 mm IN STANDARD OR ACCORDING TO CUSTOMER'S SPECIFICATION,
- 2) SOUND REDUCTION (R_w): MIN 40 dB.
- 3) THIS DRAWING SHOWS RIGHT HINGED DOOR.
- 4) OPTIONAL WITHOUT VENTILATION GRILL

B-15 CLASS MARINE DOOR

Interior type

KK
3501-102

MARKING:
Dimensions:
W x H - clear opening, H1, H2 - as in the drawing

Hinging:
L - left hinged, **R** - right hinged

Type:
T1 or **T2** according to drawing

Gap height:
G - dimension in mm (standard: 3 or 15mm)

Accessories:
K - Kick-out panel

V - Ventilation grill (standard: BANCO), free air space - 150, 200, 300, 400, 500 cm²
L - Lock, **TL** - Toilet lock / PRODUCER-ITEM NO. (standard: REMOR-164018/164020)

Finishing:

 Door leaf: **H:X - X** - powder painted or PVC coated, colour - hinges side, **O/X - X** - powder painted, or PVC coated, colour - opposite side

 Frame: **F:X - X** - powder painted, colour

MARKING EXAMPLE

 B-15 door according to KK/3501-102, clear opening: 700x1850mm, type 2, gap size: 3mm, ventilation grill 150 cm², door leaf powder painted with RAL9010 (hinges side) and Gislaved Decor H-1320-27-F12R (opposite side), frame powder painted with RAL9010:

DOOR B-15 (KK/3501-102)/700X1850/30/200/L/T2/G3/V(150)/L/H:RAL9010/O:Gislaved Decor H-1320-27-F12R/F:RAL9010
NOTES:

- 1) 972 mm IN STANDARD OR ACCORDING TO CUSTOMER'S SPECIFICATION.
- 2) SOUND REDUCTION (R_w): UP TO 33 dB.
- 3) THIS DRAWING SHOWS RIGHT HINGED DOOR.



B-15 CLASS MARINE DOOR

KK

Interior type

3501-XX

USAGE / INSTALMENT

Our B-15 class marine doors are designed for interior usage on off-shore objects wherever B-15 class of fire protection is required. They are designed for installment in interior development with ships bulkheads.

CONSTRUCTION OVERVIEW

Frame is made of 1,5mm steel sheet, powder painted according to a RAL colour system. Sill is protected by a cover made of stainless steel. **Door leaf** is made of steel sheet protected against corrosion, painted with RAL colours or PVC coated according to Gislaved Decor H-1320 catalogue. Enforced with internal frame, filled out with mineral wool, the door leaf is mounted on three stainless steel hinges (spring hinges as a option). In standard door leaf come with: lock REMOR (or other on customer's request), enforcement for automatic door closer (both sides of door leaf) and reinforcement for a rubber shock absorber or a magnetic catch (hinges side).

Additionally doors can be equipped with:

- Kick-out panel
- Ventilation grill from 125 up to 500 cm²
- Door closer

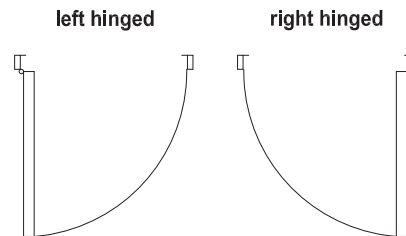
MARKING:

Dimensions:

W x H - clear opening

Hinging:

- L** - left hinged
R - right hinged



Door leaf type:

D - 1 - without protecting frame, **2** - with protecting stainless steel frame, **3** - with protecting powder painted frame



Sill type:

S - 1 - 6 according to the drawing

Gap height:

G - dimension in mm (standard: 3 or 15mm)

Accessories:

- K** - Kick-out panel
- Ventilation grill (standard: BANCO), free air space - 150, 200, 300, 400, 500 cm²
L - Lock / PRODUCER-ITEM NO. (standard: REMOR-164018)
L - Toilet lock / PRODUCER-ITEM NO. (standard: REMOR-164020)
ATH- Acoustic, top grill from hinge side, **ATS** - Acoustic, top grill from opposite side

Finishing:

Door leaf:

- H:RALXXXX** **X** - powder painted, colour according to RAL - hinges side
O:RALXXXX **X** - powder painted, colour according to RAL - opposite side
H:XXXX - PVC coated - hinges side, colour according to Gislaved Decor H-1320
O:XXXX - PVC coated - opposite side, colour according to Gislaved Decor H-1320

Frame:

- F:RALXXXX** **X** - powder painted, colours according to RAL
F - primed

MARKING EXAMPLE

B-15 door according to KK/3501-11, clear opening: 700x1850mm, left hinged with protecting frame powder painted with RAL9010, sill type: 5, gap size: 3mm, ventilation grill with 150 cm² of free air space, toilet lock REMOR-164020, door leaf powder painted with RAL9010 (hinges side) and RAL1015 (opposite side), frame powder painted with RAL9010:

DOOR B-15 (KK/3501-11)/700X1850/L/D3:RAL9010/S5/G3/V(150)/TL/REMOR-164020/H:RAL9010/O:RAL1015/F:RAL9010

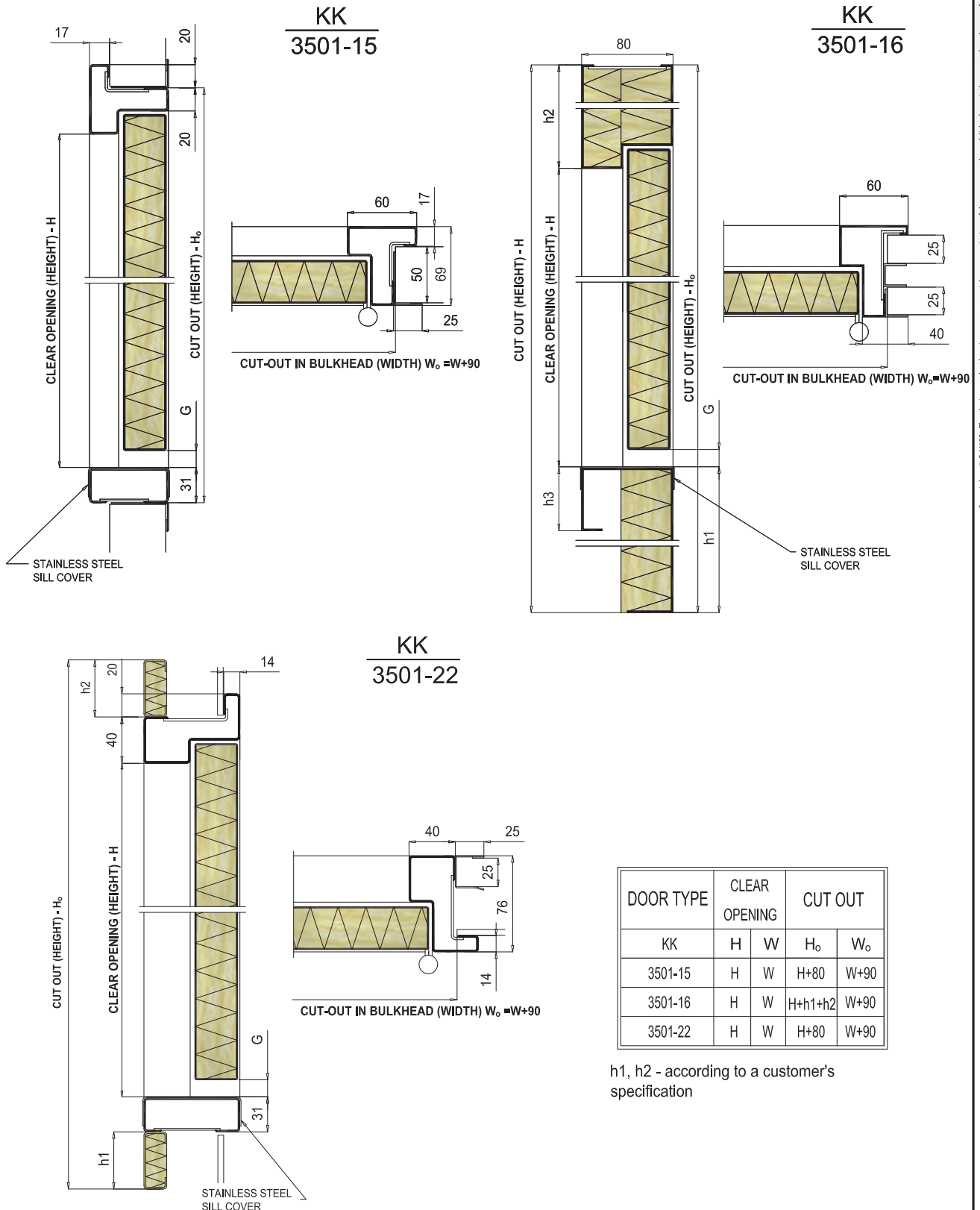
h1, h2 - according to a customer's specification

B-15 CLASS MARINE DOOR

Interior type

KK

3501-XX

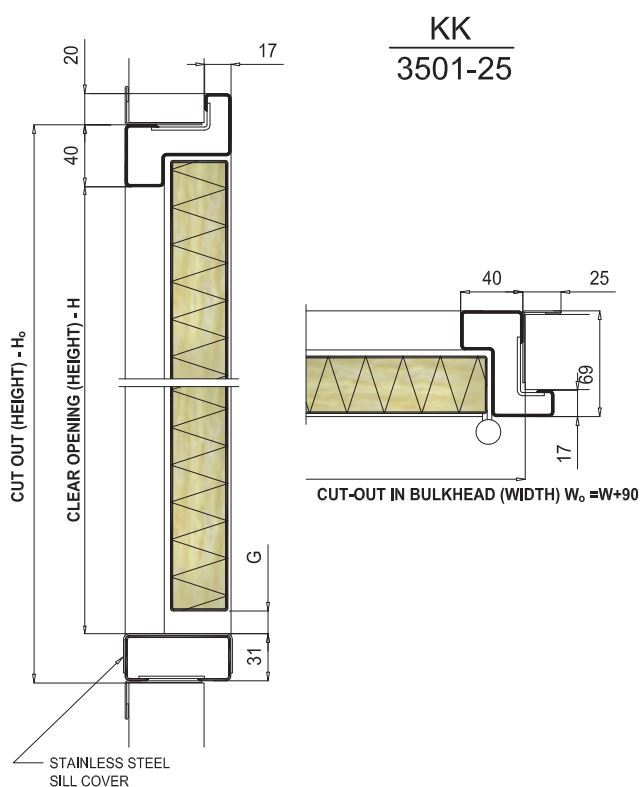
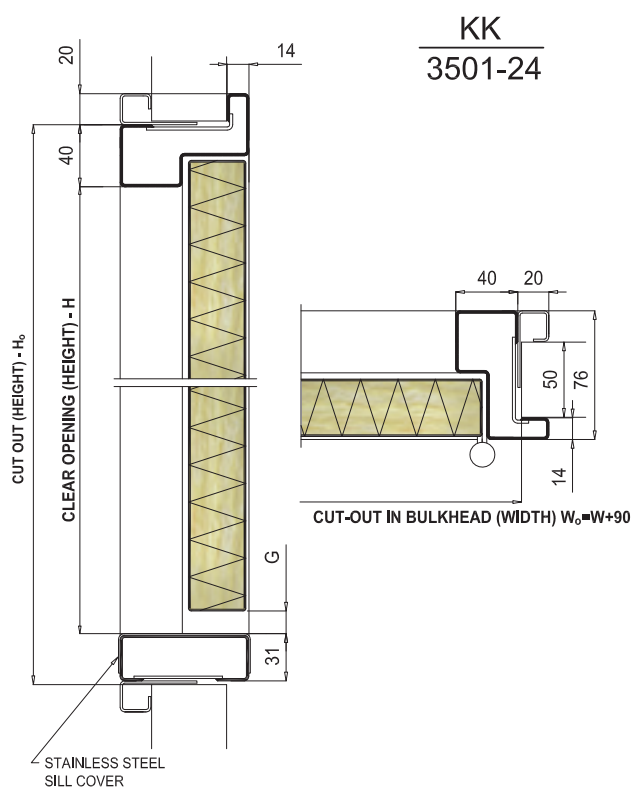
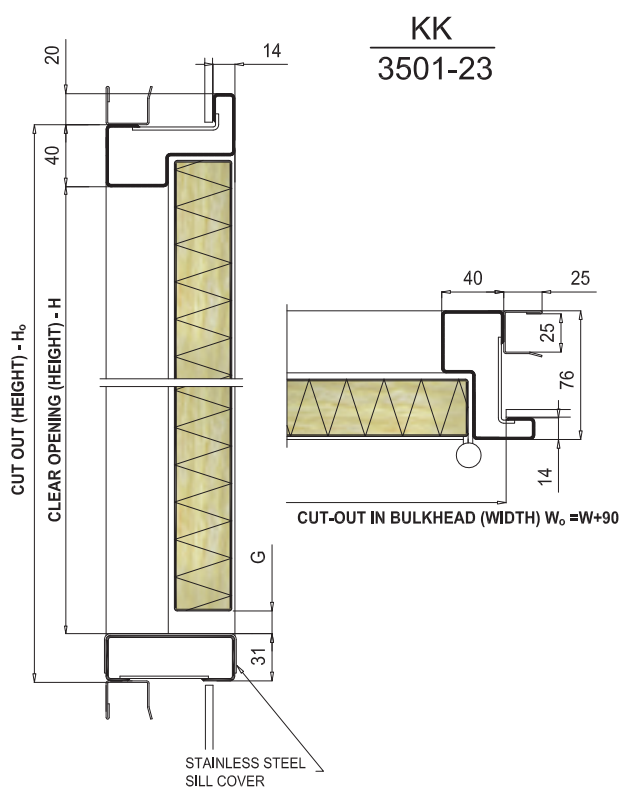


B-15 CLASS MARINE DOOR

Interior type

KK

3501-XX



DOOR TYPE	CLEAR OPENING		CUT OUT	
	H	W	H_o	W_o
3501-23	H	W	H+80	W+90
3501-24	H	W	H+80	W+90
3501-25	H	W	H+80	W+90

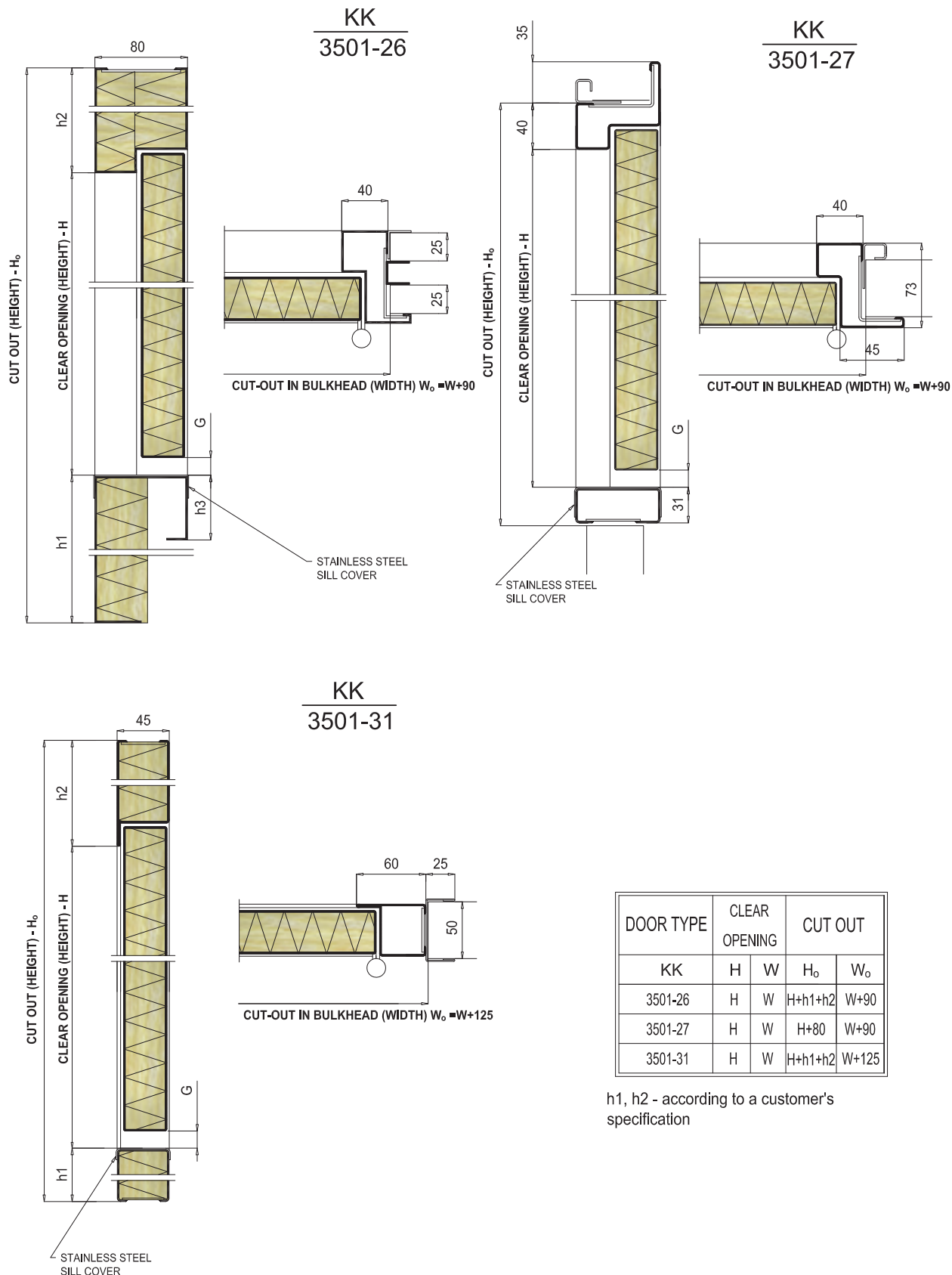
h1, h2 - according to a customer's specification

B-15 CLASS MARINE DOOR

Interior type

KK

3501-XX

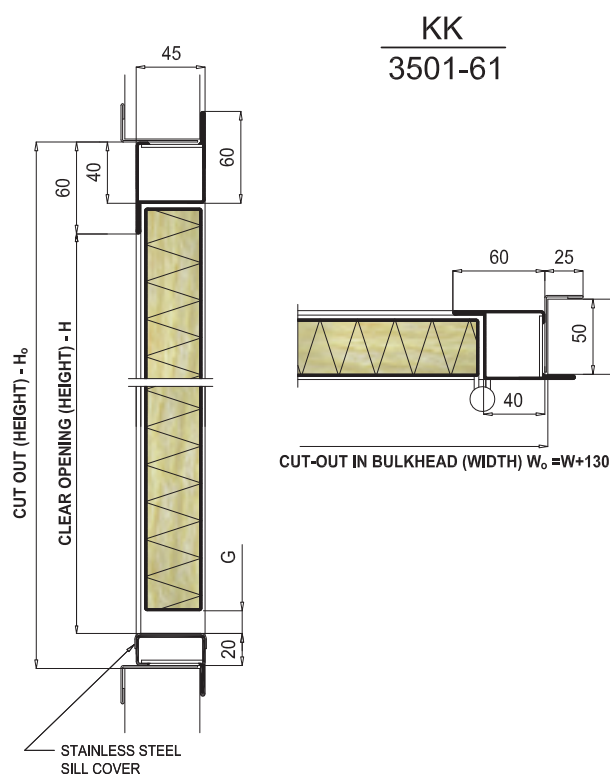
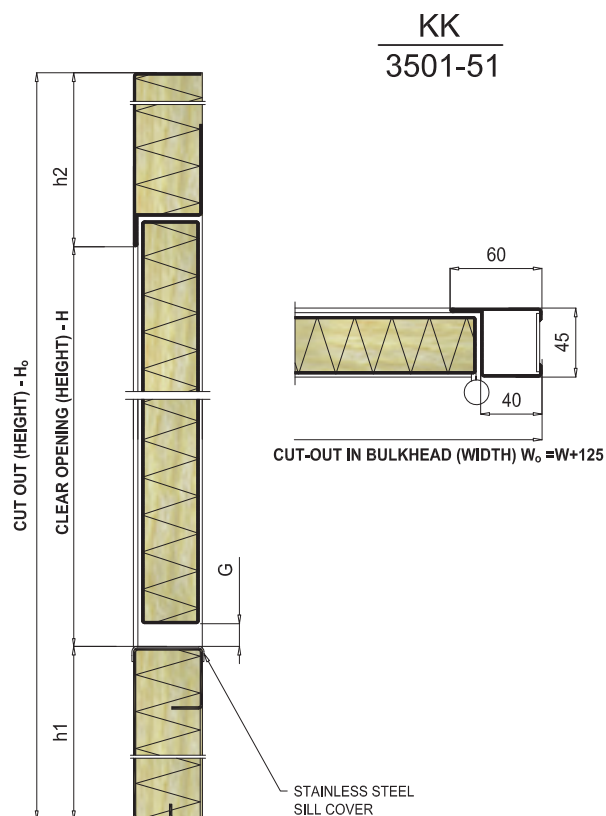
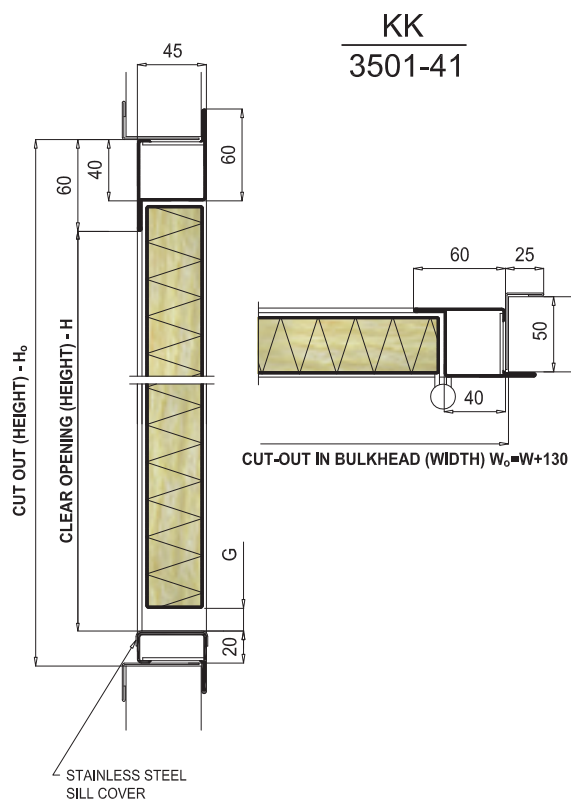


B-15 CLASS MARINE DOOR

Interior type

KK

3501-XX



DOOR TYPE	CLEAR OPENING		CUT OUT	
	H	W	H_0	W_0
3501-41	H	W	$H + 90$	$W + 130$
3501-51	H	W	$H + h1 + h2$	$W + 125$
3501-61	H	W	$H + 90$	$W + 130$

$h1, h2$ - according to a customer's specification

Inspection hatches are produced according to a customer's specification.

A frame can be made of stainless steel or galvanized steel and powder painted. The hatch leaf can be made of steel covered with PVC film, stainless steel or RAL painted.

