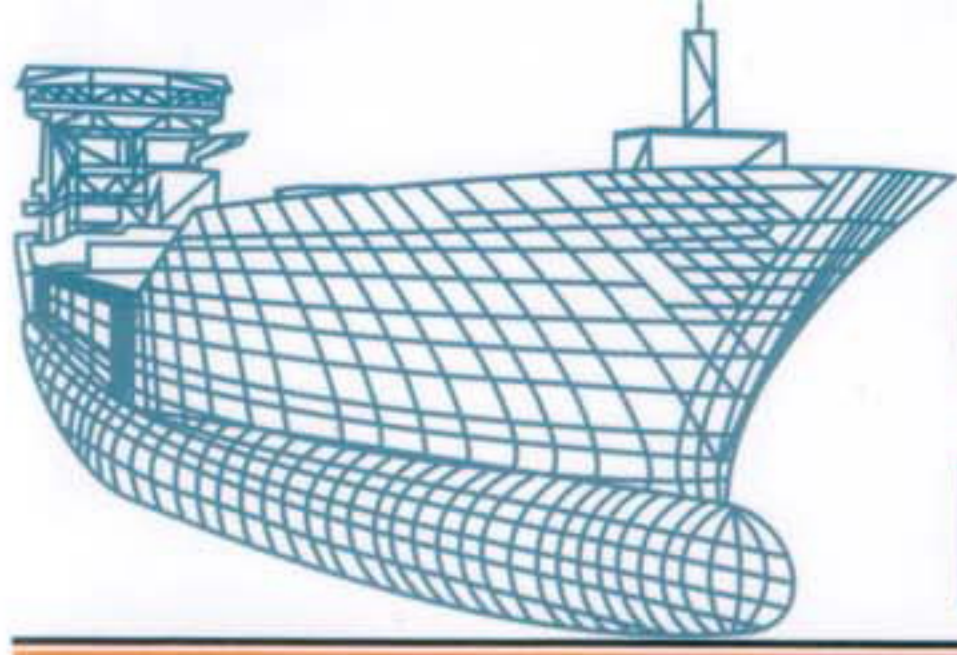


Polish magazine of shipbuilding industry  
and firms cooperated with this sector



# ShipNews

June 2006 r.



Made in Poland

The equipment of sanitary cabins, crew's and passengers' on vessels is a specialized product of Banco Company from Rusocin in Pomeranian voivodeship. The company designs and produces this assortment.

BANCO manufactures metal furniture, lighting frames, ship doors, formworks and other equipment installed in each sanitary cabin, crew's or passengers' on the vessel. The company installs bathroom accessories like glass cupboards, lighting frames, floors and doors class B15 and C.

All products are made of steel, aluminum or stainless steel; they are galvanized and powder painted.

*- We have gained 15 year experience in sheet treatment, inclusive stainless steel and aluminum- informs Patryk Wolsza, marketing specialist in BANCO. - We have got CNC angle bending machines, CNC contour band saws, eccentric presses, section form rolling machines integrated with rolling mills, spot-welding presses, TIG-MIG welding stands, powder painting room, complete series of types of machines and devices*



All furniture is produced according to company's design and technical specification or to customer's order.

BANCO W.H. Banel - Gdansk

ul. Gdańska 16  
PL 83-031 Rusocin

tel. +48 (0)58 683 55 92  
tel. +48 (0)58 683 55 93  
fax. +48 (0)58 683 48 84  
e-mail: info@banco.pl  
banco@banco.pl  
www.banco.pl

*necessary to manufacture any kind of products made of sheet.*

Wall and ceiling panels are two of the newest products, which perfectly match the requirements of indoor vessel equipment. They are characterized by uncomplicated and quick installation, low weight and high sound reduction.

There are made of galvanized steel, coated with decorative PVC foil, of fire resistant materials filled with mineral wool. All panels are delivered with full range of angle and connecting profiles.

Lighting frames are an important element of vessel equipment. Difficult operation conditions require special parameters of lighting frames. BANCO lighting frames are designed to be utilized in places of required IP 44.

They are adjusted to work at the frequency of 50 and 60 Hz and voltage of 230V and 115V. They can be installed directly on the wall or metal furniture. They are equipped with separating transformer and all-purpose Euro-American sockets BANCO has got patent for.

The ship voyage usually lasts a dozen or so months. The crew should feel at home so the cabins must be equipped with all necessary everyday use appliances. At the same time they must meet the requirements of specific conditions on the sea, it means they must be heavy duty and durable, easy to operate, ergonomic, non-flammable, of low weight and small dimensions.

Banco produces a wide range of painted and laminated furniture meeting these requirements. It is made of steel, aluminum or stainless steel. It delivers beds (single and double), pullman beds, different kinds of sofas, wardrobes and cabinets, desks, chests of drawers, tables and other kinds of furniture necessary in vessel cabins.

The novelty in the range of metal furniture from BANCO is Pullman hidden in a ceiling installed in a self-supporting ceiling cassette with B15 certificate.

A sofa-bed KK-86-001 is a combination of bed and sofa. In an open position it is just a sofa, and in a closed one, after fixing the mattress, it is a bed. Sofa-bed is made of galvanized steel, RAL powder painted. A swivel mechanism of the bed is hidden in possible to disassemble side service panels. The furniture is upholstered with leather, and the seats are made of polyurethane foam profiles.

Another furniture offered by the company as a part of vessel cabin equipment is a writing desk KK 65-001. It is made of aluminum to comply with strict weight conditions on some vessels. Drawers and the door is locked with a push to close lock (there is a possibility to add a cylinder for the key).

It is possible to adjust the length of the only leg, the top is made in sandwich technology (there is mineral wool with reinforcements between bottom and upper laminate and metal sheet).

The elements of the construction of the top is a counter pressure laminate, mineral wool - Rockwool Marine, aluminum sheet and visible laminate of any structure.

Banco offers also an industrial safety (BHP) wardrobe KK 38-002-0000-2. It is a classic wardrobe used in changing rooms on vessels.

## feel at home

Air holes at the top and the bottom of its body enable air circulation. In standard version „padlock“ locks are installed, a double module is integrated with a bank.

It is possible to manufacture modules for 1, 2, 3 or 4 users. Wardrobes are powder painted in different colours. All furniture is produced according to company's design and technical specification or to customer's order.

Apart from furniture installed in crew cabins on vessels, Banco company offers sanitary equipment too. It can be installed on passenger cruisers, crew vessels, naval vessels and in overland cabins.

Bathroom equipment consists of bathroom cabinets (1-2-3 and 4-doors), lighting frames, floors, doors, baskets, reclining banks, towel rails and revision partition. Mirror cabinets can be produced in two different versions-with full length mirror doors or with integrated light. They may be made of steel, stainless steel and are powder painted.

In the company's offer there are doors designed to close the indoor gangways on vessels, of required fire protection B15.

B15 doors KK 3501-XX are non-flammable doors of B15 class. They are produced according to BANCO technology. Maximal dimensions in inside diameter are 2000x800. They are adjusted to be fixed indoors to steel walls with panel shoring. The frame is made of steel sheet, powder lacquered. The threshold is protected with a stainless steel sheet.

A door leaf is made of galvanized steel sheet, powder painted or coated with PVC foil. The door leaf is filled with mineral wool and fixed on three hinges made of stainless steel and as standard equipped with a frame and a lock.

Additionally an emergency hatch, ventilation grating and a self-closing unit can be assembled in the door.



A sofa-bed is a combination of bed and sofa.

In 2004 the company got a certificate for the door B-15, which guarantees their best quality in compliance with customer's specification and recommendations of valid certificates.

One of the biggest furniture produced

by the company is a steel medicine cupboard KK 39-001. It consists of two parts designed for installation direct on board. The bottom part includes two drawers locked and three trays with treated milk-glass dedicated for medicine portioning. The top surface of bottom segment is covered with wood-like laminate.

Medicine is kept on wooden frame in the upper part. The safe is also situated in the upper part. All drawers and doors have master key locks.

Cupboard KK-59-002 is also in the offer. It's made of powder painted steel construction. The whole unit has been based on reinforced plinth attached to vessel's deck. The top is made in sandwich technology. Push to close locks have been used in drawers and doors.

Banco specialists have also thought about floors for vessels. In majority they are made to customers' requirements: of steel, aluminum or stainless steel. They can be utilized both in marine and land sanitary cabins.

(eb)

### Recognized Private Label

**Patryk Wolsza, Marketing Specialist in BANCO:**

*- Banco Company was established in 1993. It operates in a modern factory of the area of 5000 square meters. There are a metal furniture production hall, painting hall, assembly hall, storehouse and offices. The company employs 60 people, whose high qualifications guaranty professional service of each department.*

*Since the beginning of its activity we have managed to create a recognized in maritime industry label and good quality with considerably low prices.*

*We have introduced quality system, which effectively meets the expectations of our customers. It results basically from production process and organization of production process- administration, planning, specialized technological department and marketing.*

*Most of our products require certifications of classification societies.*

*In 2004 our company was awarded by Germanischer Lloyds ISO 9001 Certificate. It justifies the quality of our products and guarantees that the customers receive the highest level service. 80 % of our customers are foreign partners. Currently we co-operate with many European and North American Companies.*