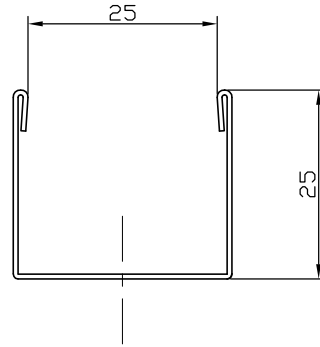
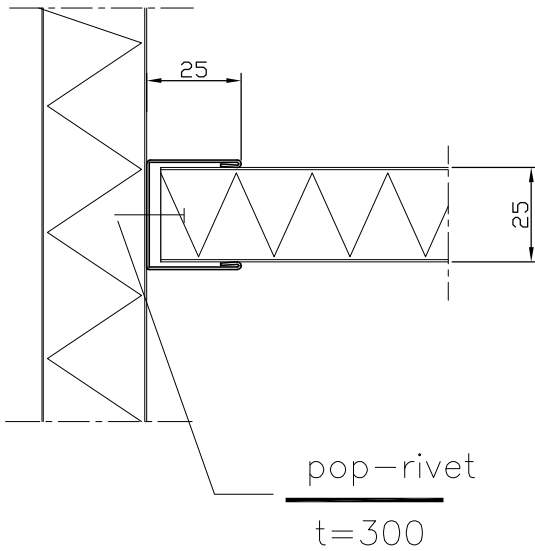


"PRD 10-25"

PVC-coated galv. steel sheet or painted steel sheet

Example of use:

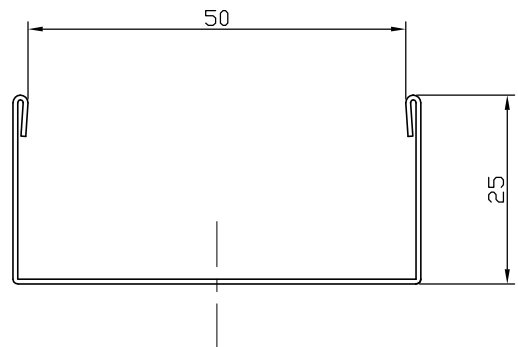
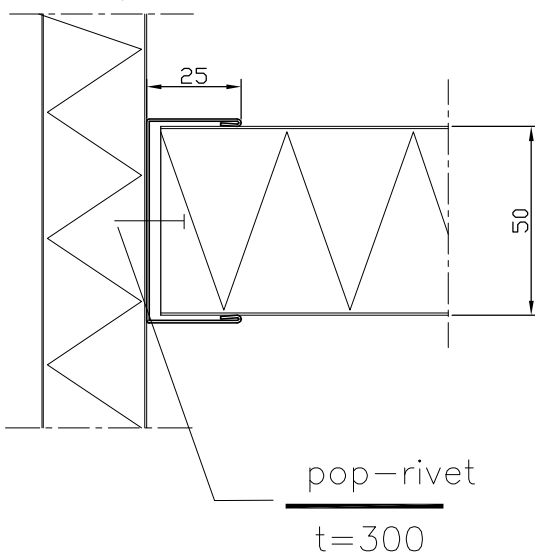


Thickness 0,6 mm
 Weight: 0,37 kg/m

"PRD 10-50"

PVC-coated galv. steel sheet or painted steel sheet

Example of use:



Thickness 0,6 mm
 Weight: 0,48 kg/m

Surface material

Material: hot dipped galvanised steel sheet
 Coating: without coating
 Fire class: low flame spread surface class1

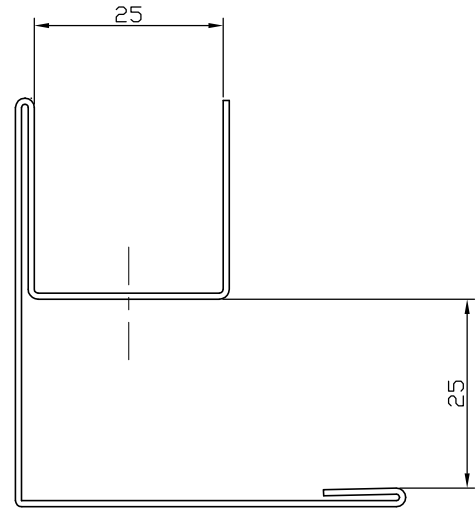
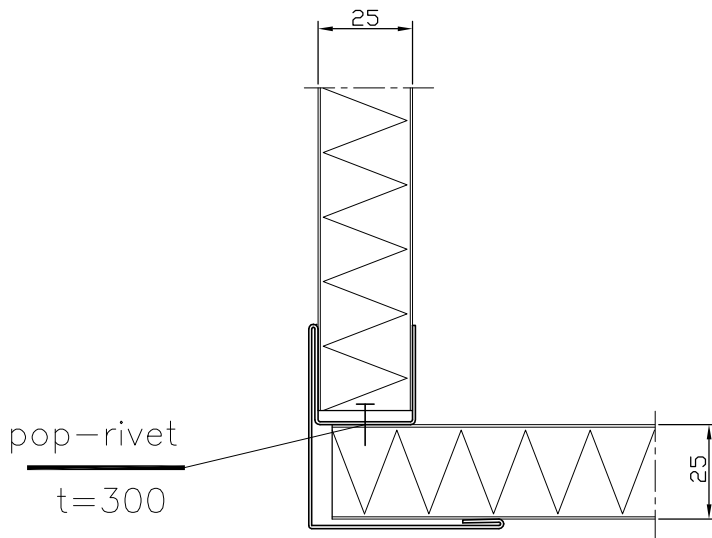
Our products are produced according to our projects and documentation or customer's specification.

Copyrights © 2007 BANCO.
 The design or the drawing must not, without permission of the company, be published, copied or reproduced, manufactured or in any other way unauthorized exploited.

"PRD 11-25"

PVC-coated galv. steel sheet or painted steel sheet

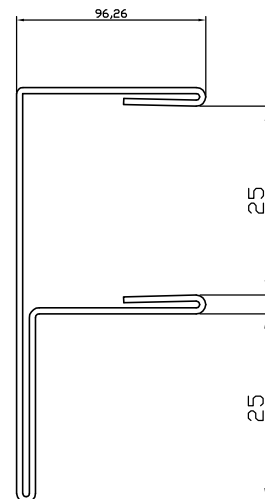
Example of use:



Thickness 0,6 mm
 Weight: 0,87 kg/m

"PRD 12-25"

PVC-coated galv. steel sheet or painted steel sheet



Thickness 0,6 mm
 Weight: 0,68 kg/m

Surface material

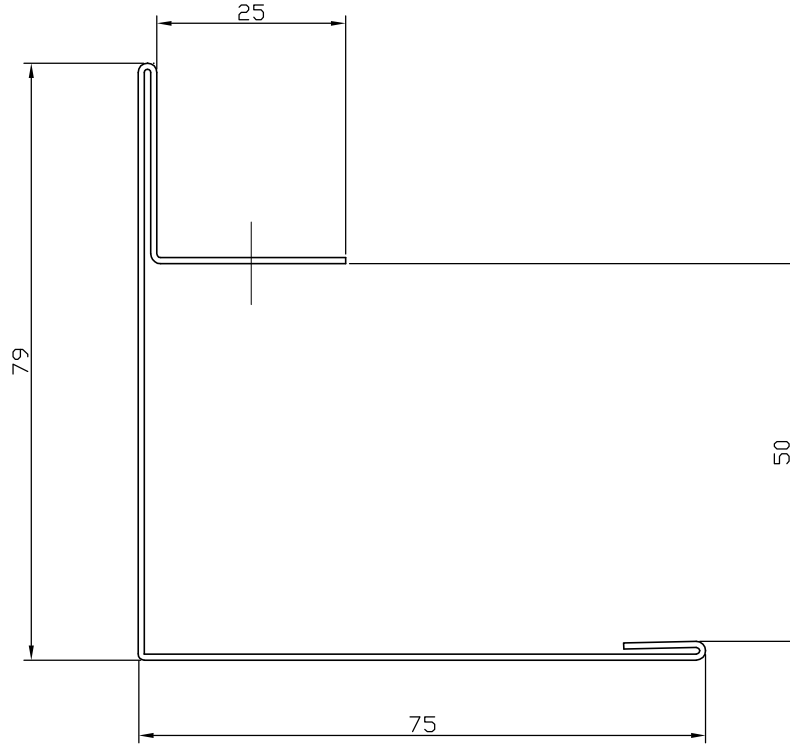
Material: hot dipped galvanised steel sheet
 Coating: without coating
 Fire class: low flame spread surface class1

Our products are produced according to our projects and documentation or customer's specification.

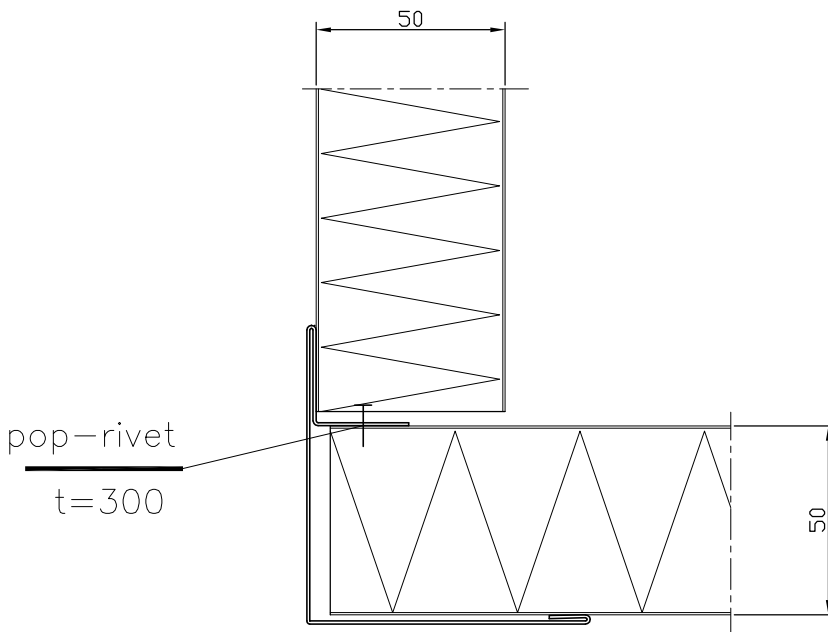
Copyrights © 2007 BANCO.
 The design or the drawing must not, without permission of the company, be published, copied or reproduced, manufactured or in any other way unauthorized exploited.

"PRD 11-50"

PVC-coated galv. steel sheet or painted steel sheet



Example of use:



Thickness 0,6 mm

Weight: 1.1 kg/m

Surface material

Material: hot dipped galvanised steel sheet

Coating: without coating

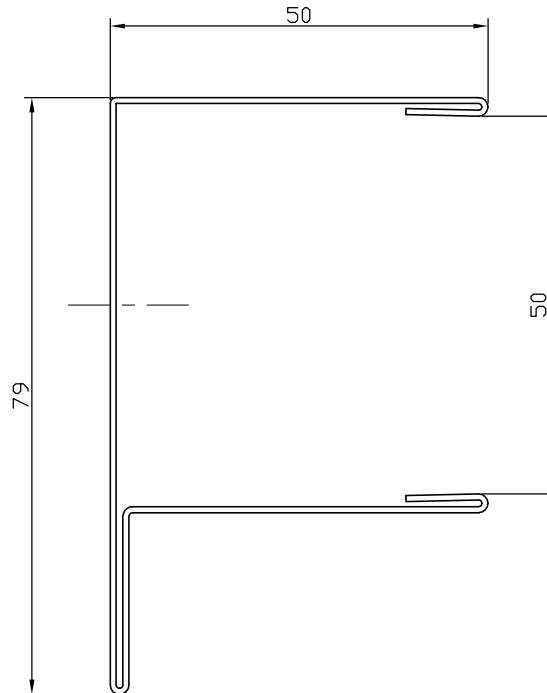
Fire class: low flame spread surface class1

Our products are produced according to our projects and documentation or customer's specification.

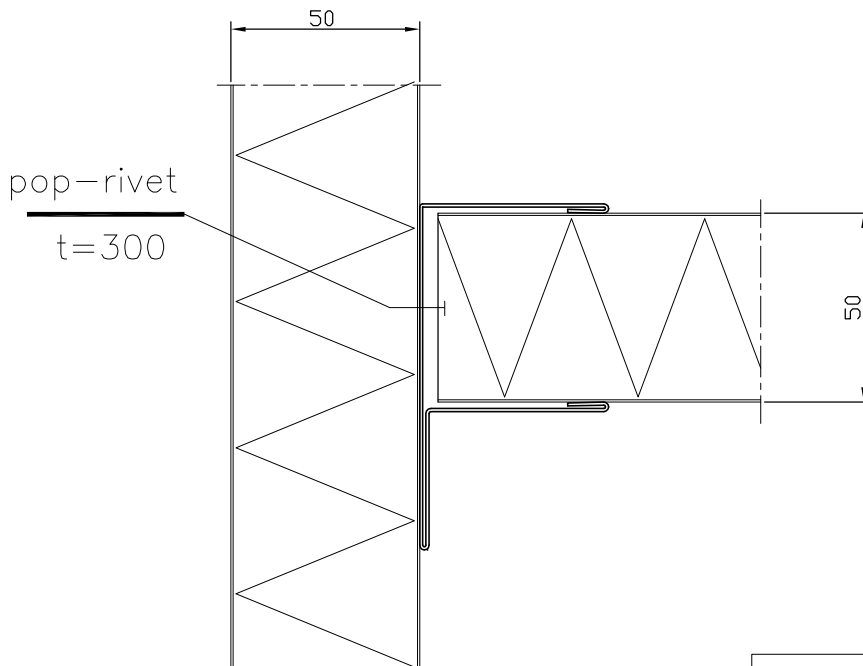
Copyrights © 2007 BANCO.
 The design or the drawing must not, without permission of the company, be published, copied or reproduced, manufactured or in any other way unauthorized exploited.

"PRD 12-50"

PVC-coated galv. steel sheet or painted steel sheet



Example of use:



Thickness 0,6 mm

Weight: 1,1 kg/m

Surface material

Material: hot dipped galvanised steel sheet

Coating: without coating

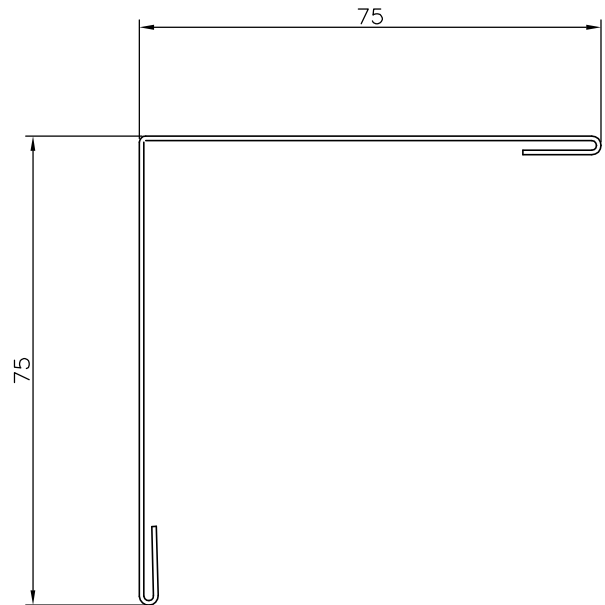
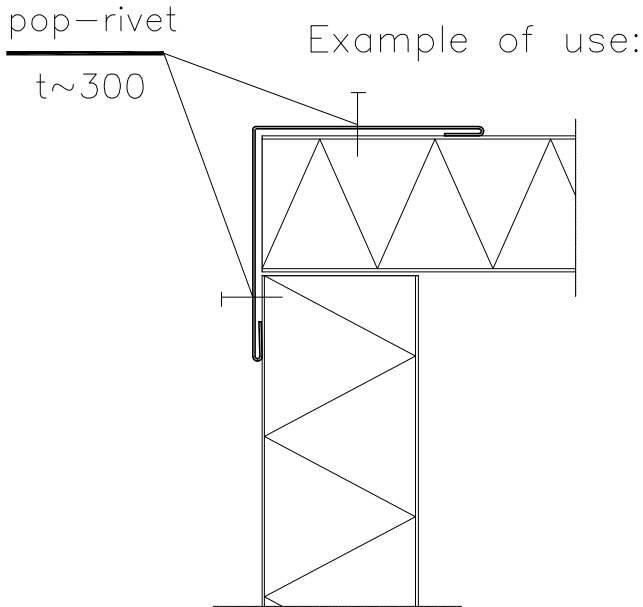
Fire class: low flame spread surface class1

Our products are produced according to our projects and documentation or customer's specification.

Copyrights © 2007 BANCO.
The design or the drawing must not, without permission of the company, be published, copied or reproduced, manufactured or in any other way unauthorized exploited.

"PRD 13"

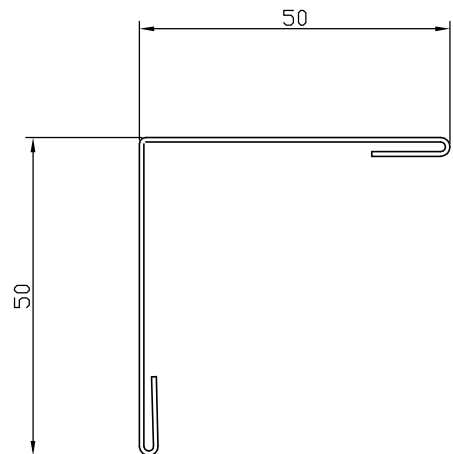
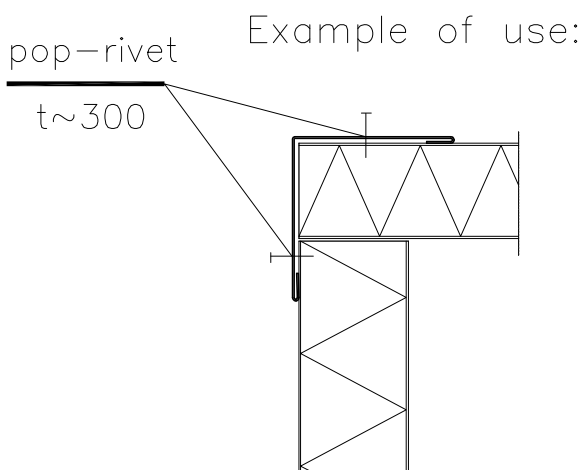
PVC-coated galv. steel sheet or painted steel sheet



Thickness 0,6 mm
 Weight: 0.82 kg/m

"PRD 14"

PVC-coated galv. steel sheet or painted steel sheet



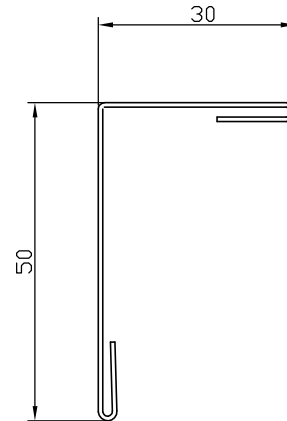
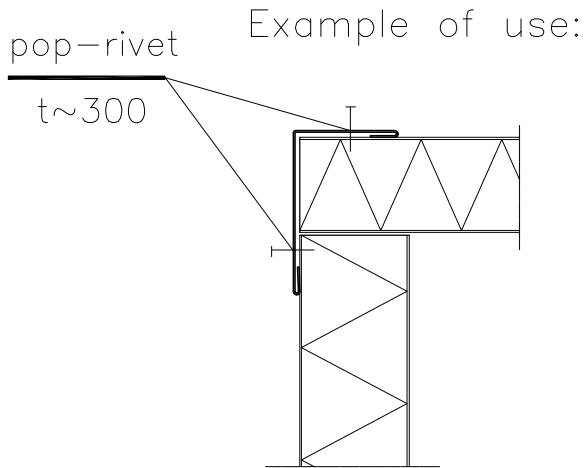
Thickness 0,6 mm
 Weight: 0.6 kg/m

Surface material
Material: hot dipped galvanised steel sheet
Coating: without coating
Fire class: low flame spread surface class1

Our products are produced according to our projects and documentation or customer's specification.

"PRD 15"

PVC-coated galv. steel sheet or painted steel sheet

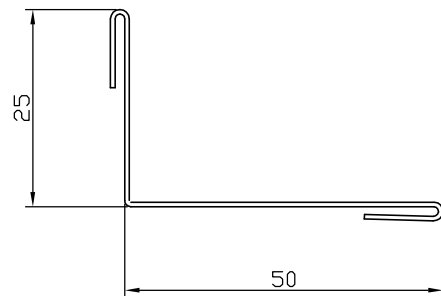
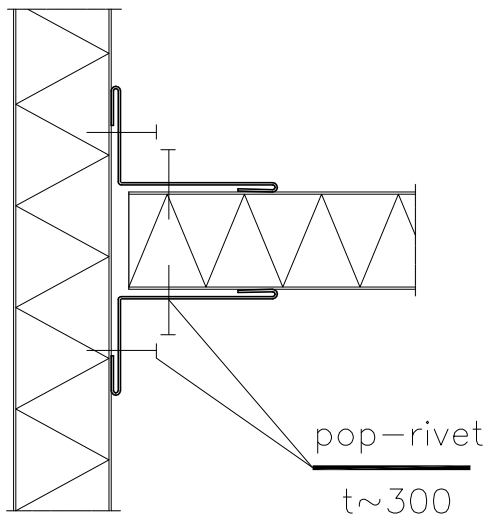


Thickness 0,6 mm

Weight: 0.48 kg/m

"PRD 16"

Example of use:



Thickness 0,6 mm

Weight: 0,45 kg/m

Surface material

Material: hot dipped galvanised steel sheet

Coating: without coating

Fire class: low flame spread surface class1

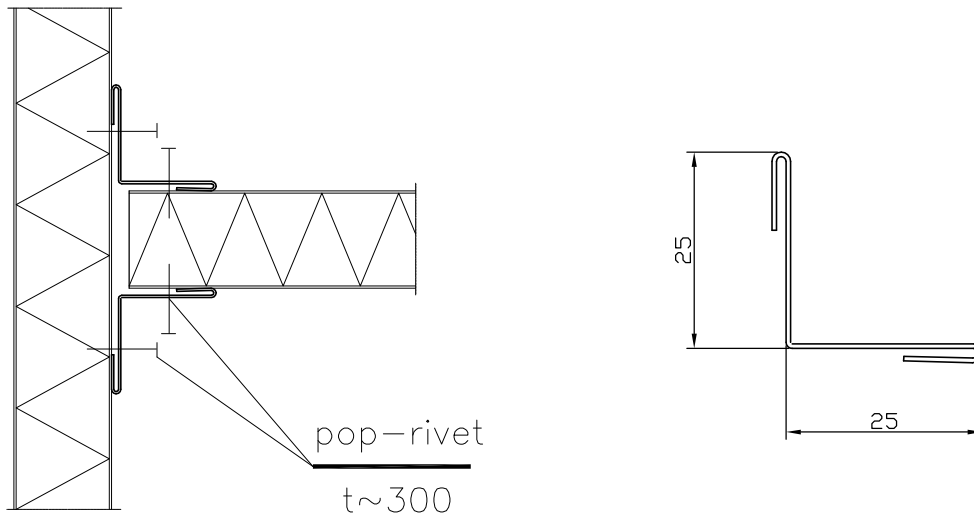
Our products are produced according to our projects and documentation or customer's specification.

Copyrights © 2007 BANCO.
The design or the drawing must not, without permission of the company, be published, copied or reproduced, manufactured or in any other way unauthorized exploited.

"PRD 17"

PVC-coated galv. steel sheet or painted steel sheet

Example of use:



Thickness 0,6 mm

Weight: 0,35 kg/m

Surface material

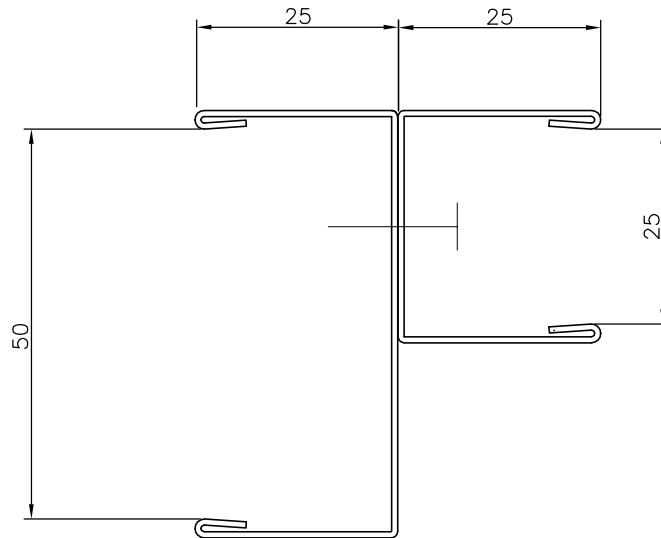
Material: hot dipped galvanised steel sheet
Coating: without coating
Fire class: low flame spread surface class1

Our products are produced according to our projects and documentation or customer's specification.

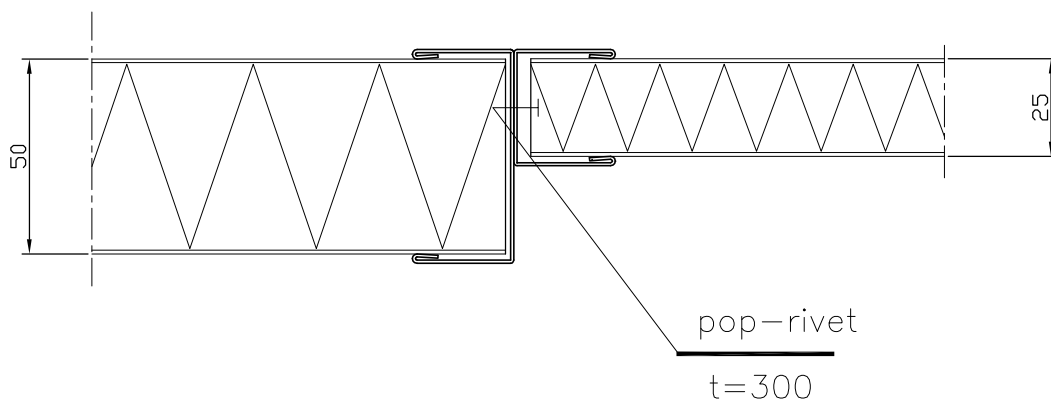
Copyrights © 2007 BANCO.
The design or the drawing must not, without permission of the company, be published, copied or reproduced, manufactured or in any other way unauthorized exploited.

"PRD 10-25/50"

PVC-coated galv. steel sheet or painted steel sheet



Example of use:



Thickness 0,6 mm

Weight: 1.1 kg/m

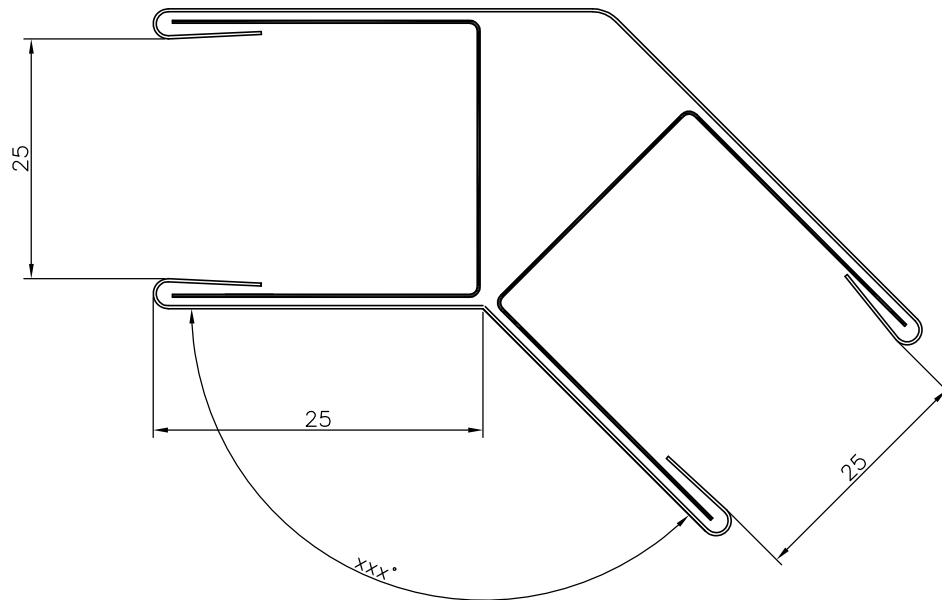
Surface material
Material: hot dipped galvanised steel sheet
Coating: without coating
Fire class: low flame spread surface class1

Our products are produced according to our projects and documentation or customer's specification.

The design or the drawing must not, without permission of the company, be published, copied or reproduced, manufactured or in any other way unauthorized exploited. Copyrights © 2007 BANCO.

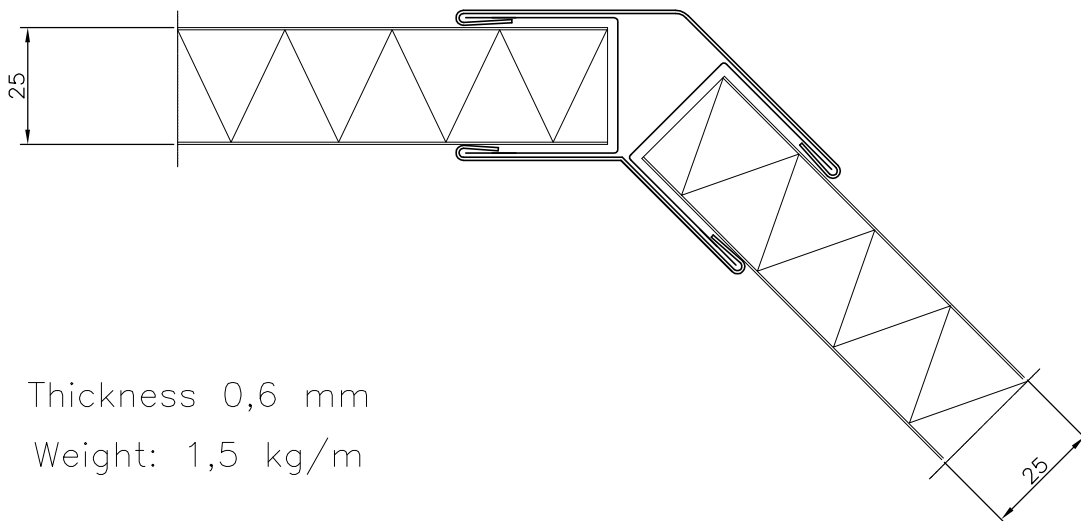
"PRD 18-xxx°/25"

PVC-coated galv. steel sheet or painted steel sheet



Angle "xxx°" between 90° and 180°

Example of use:



Thickness 0,6 mm

Weight: 1,5 kg/m

Surface material

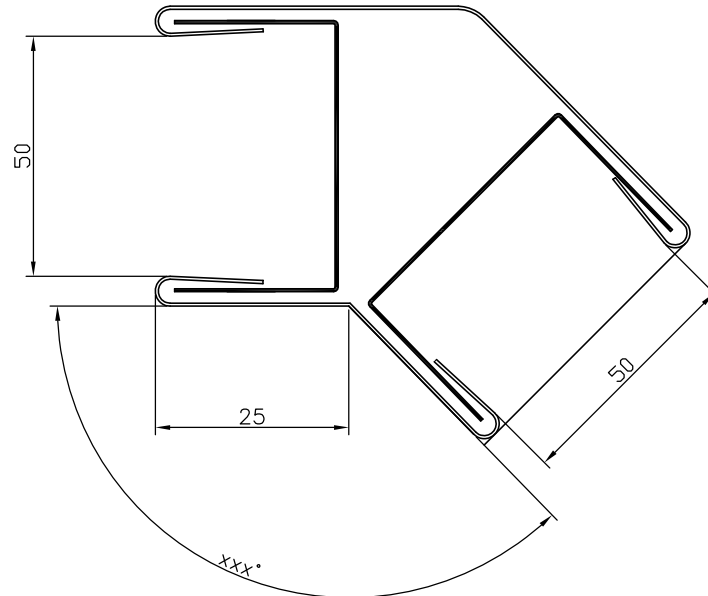
Material: hot dipped galvanised steel sheet
Coating: without coating
Fire class: low flame spread surface class1

Our products are produced according to our projects and documentation or customer's specification.

Copyrights © 2007 BANCO.
The design or the drawing must not, without permission of the company, be published, copied or reproduced, manufactured or in any other way unauthorized exploited.

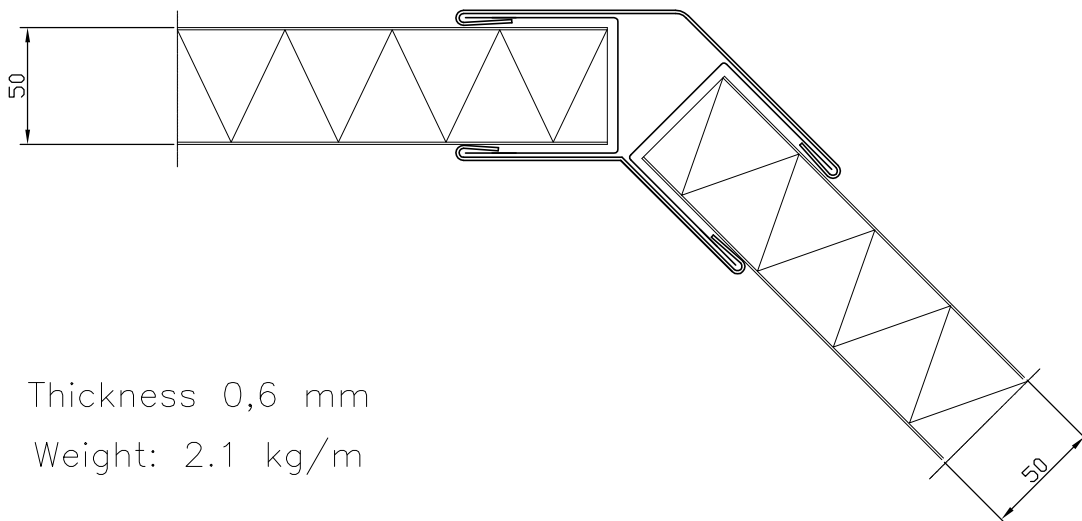
"PRD 19-xxx°/50"

PVC-coated galv. steel sheet or painted steel sheet



Angle "xxx°" between 90° and 180°

Example of use:



Thickness 0,6 mm

Weight: 2.1 kg/m

Surface material

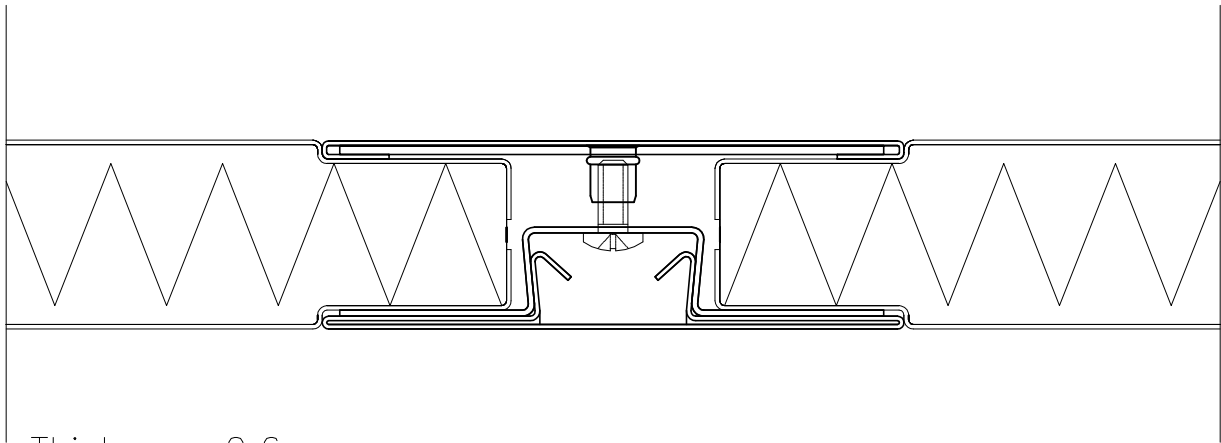
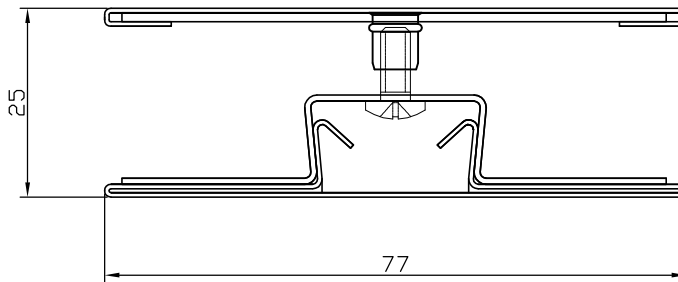
Material: hot dipped galvanised steel sheet
Coating: without coating
Fire class: low flame spread surface class1

Our products are produced according to our projects and documentation or customer's specification.

Copyrights © 2007 BANCO.
The design or the drawing must not, without permission of the company, be published, copied or reproduced, manufactured or in any other way unauthorized exploited.

"PRD 31/25"

PVC-coated galv. steel sheet or painted steel sheet



Thickness 0,6 mm

Weight: 1,6 kg/m

Surface material

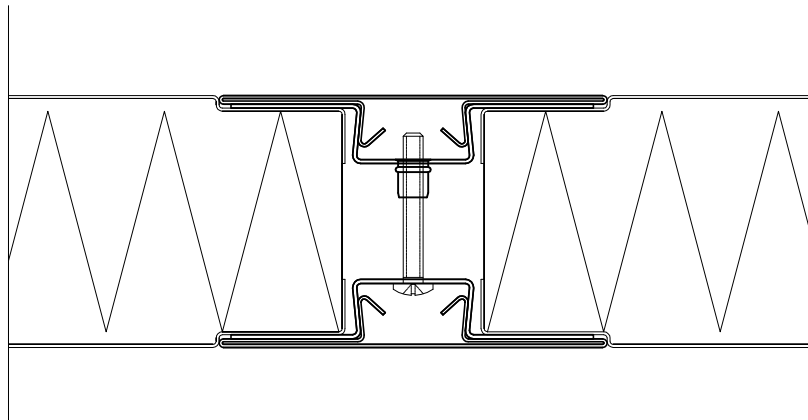
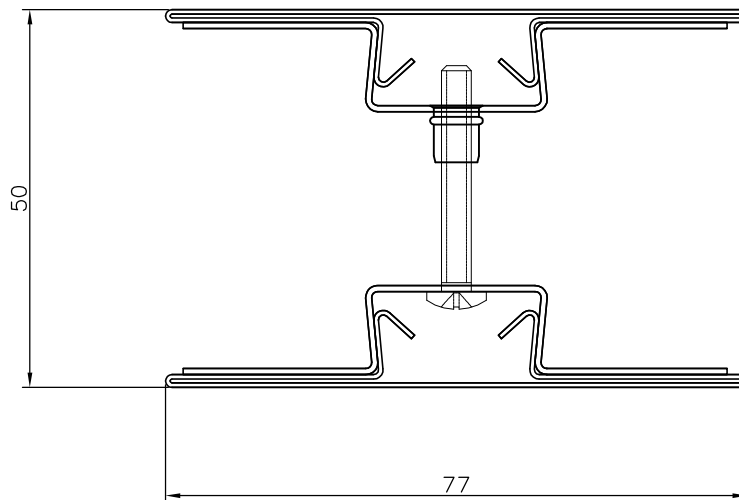
Material: hot dipped galvanised steel sheet
Coating: without coating
Fire class: low flame spread surface class1

Our products are produced according to our projects and documentation or customer's specification.

Copyrights © 2007 BANCO.
The design or the drawing must not, without permission of the company, be published, copied or reproduced, manufactured or in any other way unauthorized exploited.

"PRD 30/50"

PVC-coated galv. steel sheet or painted steel sheet



Thickness 0,6 mm

Weight: 2.1 kg/m

Surface material

Material: hot dipped galvanised steel sheet
Coating: without coating
Fire class: low flame spread surface class1

Our products are produced according to our projects and documentation or customer's specification.

Copyrights © 2007 BANCO.
The design or the drawing must not, without permission of the company, be published, copied or reproduced, manufactured or in any other way unauthorized exploited.